

ACCOMMODATION & DINING GUIDE

FARMER'S LEAP

-VISIT FOR A DAY-

TATIARA

-STAY FOREVER-

ACCOMMODATION

BORDERTOWN



105 ON THE PARK

105 Park Terrace, Bordertown

08 8752 0922

105onthepark.com.au

bookings@105onthepark.com.au

Quiet and peaceful location, overlooking the Bordertown Memorial Parklands. Offering 12 ensuite rooms, split system air conditioners, bar fridge, microwave, toaster, tea and coffee facilities and new flat screen televisions. Wi-Fi available.

BORDERTOWN BED & BREAKFAST

Bottlebrush House

42 Cannawigara Road, Bordertown

0428 165 844

bordertownbandb.com.au

admin@bordertownbandb.com.au

A popular comfortable unit in the most peaceful part of Bordertown. This is a self-contained unit with a living and sleeping area. Full kitchen facilities and pet friendly. Queen-sized bed & ensuite. Netflix and Wi-Fi are available. Each room has an air conditioner & ceiling fan.



BORDERTOWN BED & BREAKFAST

The Pines

70 Cannawigara Road, Bordertown

0428 165 844

bordertownbandb.com.au

admin@bordertownbandb.com.au

Pines 1: 1 bedroom with ensuite, modern kitchen, lounge, secure parking.
Pines 2: 2 bedrooms and can interconnect with Pines 1. Ducted heating and cooling.
Handy to town facilities. Wheelchair access. Netflix and Wi-Fi are available

BORDERTOWN CARAVAN PARK

41 Penny Terrace, Bordertown

08 8752 1752

bordertowncaravanpark.com.au

info@bordertowncaravanpark.com.au

A friendly and peaceful place to stay, the Bordertown Caravan Park is conveniently located near the border of South Australia and Victoria. The park features well established trees, ensuite cabins and spacious grassy powered and unpowered sites, with drive through sites available. Pet friendly (conditions apply). Wi-Fi available



BORDERTOWN GOLF CLUB CARAVAN PARK

Golf Course Road, Bordertown

08 8752 0082

admin@bordertowngc.com.au

The Caravan Park includes 12 powered sites with showers and toilets available. The Bordertown Golf Club is an 18 hole course with Greens and fully watered fairways. Scenic and peaceful. Birdlife, wildlife and native scrub. Situated 7km from Bordertown.

ACCOMMODATION

BORDERTOWN



BORDERTOWN HOTEL
79 East Terrace, Bordertown
08 8752 1016
bordertownhotel.com.au
managerbth@bigpond.com

Come and enjoy the wide verandas and friendly atmosphere of the Bordertown Hotel. Providing comfortable accommodation, a bistro and restaurant, gaming and a friendly country pub atmosphere, the Bordertown Hotel is a local favourite.

BORDERTOWN MOTEL

25 Dukes Highway Service Road, Bordertown
08 8752 1444
bordertown-motel.com
bordertownmotel@bigpond.com

A family run Inn that is 3kms from the town centre, within walking distance of a great variety of local shops. The Bordertown Motel has 34 rooms, from economy for 2 guests, standard, superior to family rooms that sleep up to 6 guests. In-room amenities include air conditioning and ensuite facilities. Fully licenced restaurant. Wi-Fi available.



HARCOURT HOUSE

11 Tatiara Terrace, Bordertown
0429 795 405
info@crmhaulage.com.au

This quaint house is full of character! With 3 spacious bedrooms, a large kitchen, and 2 good-sized bathrooms it is the perfect place for a large family or group who are visiting the area for community events. The long driveway allows for several cars to be parked off the street and the house is only a short walk to the main street and local sporting grounds. Accommodates up to 6.



MAPPERLEY BED & BREAKFAST

315 Golf Course Road, Bordertown
0419 854 317
bordertownaccommodation.com.au
info@bordertownaccommodation.com.au

Mapperley is a self-contained cottage located on a farm 3 km from Bordertown on Golf Course Road. It has one bedroom and can sleep up to 4 people (sofabed available). The cottage is in close proximity to the main farmhouse and has all necessary facilities. Wi-Fi available



SADIE HOUSE BED & BREAKFAST

81 McLeod Street, Bordertown
0402 040 139
[facebook.com/sadiehousebnb](https://www.facebook.com/sadiehousebnb)
sadiehousebnb@gmail.com

This charming house is centrally located. Built in 1914, it features comfortable rooms for up to 7 people, a renovated bathroom, a wood fire, heating in the bedrooms, Wi-Fi and Netflix available. Full breakfast provisions with a coffee machine. You can enjoy the underground cellar or relax in the garden. Pets and children are welcome.

ACCOMMODATION

BORDERTOWN



SAFE HAVEN WILDLIFE STAY

104 Western Drive, Bordertown

0400 262 713

prettytreen1313@gmail.com

Enjoy glamping in our fully self-contained 24 ft caravan. The van does have heating and cooling. Parked amongst the gum trees overlooking Australian native flora and fauna. We give visitors a hands-on experience with our iconic wildlife showing what is involved with taking care of all species of Australian fauna. Bottle feeds and lots of cuddles give all who visit a little slice of heaven (this is an optional extra so please let us know if you wish to do this *conditions apply) Accommodates up to 2 people.

THE WOOLSHED INN

101 Woolshed Street, Bordertown

08 8752 0347

woolshedinnhotel.com.au

admin@woolshedinnhotel.com.au

The centrally-located Woolshed Inn is the place to stay when you visit the region. Each newly refurbished room has en-suite bathrooms, flat-screen televisions, and comfy beds. Our 11 rooms now have fresh modern decor to make your stay as comfortable as possible. Restaurant and front bar facilities. Wi-Fi available.



VIOLET COTTAGE

21 Crocker Street, Bordertown

0408 812 172 |

Violet Cottage was built in 1905. 4 bedroom home, TV, air conditioning, laundry and pet friendly. Close walking distance to the town centre.

ACCOMMODATION

KEITH



GAERWOOD BED & BREAKFAST

Lot 301 Park Terrace, Keith

0411 645 870

Set in a peaceful rural location on 5 acres, not far from the town centre, Gaerwood Bed & Breakfast offers exceptional bed and breakfast accommodation in Keith. There are two rooms available, the King Suite with spa bath and the Deluxe Double with Ensuite. Both bedrooms are equipped with a flat-screen TV, heating/cooling and include free toiletries and a hairdryer for your convenience. Includes Continental breakfast or full if requested. Wi-Fi available.

ACCOMMODATION

KEITH



PEPPER TREE BED AND BREAKFAST

35 Memorial Avenue, Keith

0427 564 234

veronica.mayfield@bigpond.com

Pepper Tree BnB is nestled in a quiet residential area, a 5-minute walk from shops, cafes, and a hotel. The studio apartment is comfortable and cozy, with a queen-size bed, ensuite bathroom/laundry, slow combustion heater, and split system air conditioner. A full country breakfast is also provided. The BnB offers peaceful surroundings, with beautiful trees and a tranquil garden setting. The apartment accommodates two people and has undercover parking at the rear. Wi-Fi available.

THE GRANNY FLAT

111a Mount Charles Road, Keith

0448 449 193

trudie.hedges@gmail.com

'The Granny Flat' is situated in a quiet rural setting only 2km from the township of Keith. The 1950's two-bedroom stay has been recently renovated, offering an open relaxed living area with modern kitchen facilities. The original terrazzo bathroom reflects its timeless style. Accommodates up to 4 guests. Wi-Fi available.



TWO COW COTTAGE BED AND BREAKFAST

16 Heritage Street, Keith

0447 620 984

twocowcottage.com.au

info@twocowcottage.com.au

Two Cow Cottage BnB offers comfortable and welcoming accommodation. Centrally located, you will find welcoming, beautifully appointed rooms. Two bedrooms (1 queen, 2 single beds), separate lounge including double bed sofa, fully equipped kitchen and laundry, all linen provided, separate dining room, continental breakfast hamper. Wi-Fi available

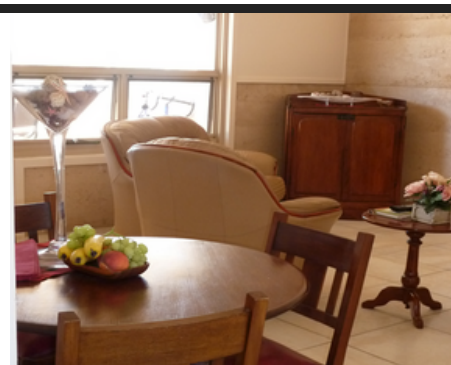
TULOU BED AND BREAKFAST

42 Emu Rise Road, Keith

0438 566 075 or 08 8755 1223

[facebook.com/Tulou](https://www.facebook.com/Tulou) | hcozens@bigpond.com

Tulou is a unique, rammed earth, environmentally friendly, fully self-contained home situated on 30 acres of rural land near a golf course. It offers 1 double room, 1 twin room, a lounge/kitchenette, 2-person spa, underfloor heating, overhead fans, and a BBQ kettle. The rental includes deluxe breakfast provisions, and guests can collect eggs from the chook house or pick fresh vegetables from the garden.



THE LAKEHOUSE RETREAT

14 Emu Rise Road, Keith

0438 310 801 or 08 8755 1500

bethaniewhite@icloud.com

The Lake House Retreat is located 5 minutes from Keith, on 7 acres of picturesque land surrounded by lush green lawns and manicured gardens. The retreat sleeps 6 people, with 1 queen bed and 2 single bunks. All linen and towels are provided, as well as beautiful body wash, shampoo and conditioner. Provisions for cooked and continental breakfast and a complimentary bottle of wine.

ACCOMMODATION

KEITH



WELLINGTON HOUSE

3 Wellington Street, Keith

0448 449 193

trudie.hedges@gmail.com

Wellington House is tucked away in a quiet street while only being a stone's throw away from the heart of town. You'll find all the creature comforts of being at home in this newly renovated space, perfect for the weary traveller or country staycation. Accommodates up to 3 guests. Wi-Fi available.

KEITH FARMHOUSE COTTAGE

EXACT LOCATION PROVIDED AFTER BOOKING

0427 826 797

Relax with the whole family at this peaceful place to stay on a farm property just 10 minutes from Keith's town centre. 2 double beds, 1 single bed, 1 sofa bed. Wi-Fi available.



BRUCE AVENUE RETREAT

Bruce Avenue, Keith

0438 807 350

Located only 2.5 hour drive from Adelaide, Bruce Avenue Retreat is a warm inviting large home for all to enjoy. The enclosed pergola with BBQ, bench seating & view of the backyard can be enjoyed throughout all seasons. The house is located only a short walk to the town centre. Wi-Fi available.

KEITH MOTOR INN

Memorial Avenue, Keith

08 8755 1500

keithmotorinn.com.au

reception@keithmotorinn.com.au

The Keith Motor Inn offers you 15 rooms with queen beds, family rooms, mini-bar facilities, Foxtel, and wireless broadband internet connection. You can choose to have an enjoyable breakfast available 7 days a week. New Tesla electric car charging station. Guests have the advantage of using the Self Check In Kiosk for late check-ins.



KEITH CARAVAN PARK

Naracoorte Road, Keith

0427 876 993

keithcaravanpark.com.au

admin@keithcaravanpark.com.au

Enjoy a quiet, clean and family friendly park bordering a Conservation Park. The Keith Caravan Park is a short walk to the main street. Features modern brick ensuite cabins with kitchen facilities, air-conditioning & televisions. On-site vans, ensuite sites, grassed and gravel powered sites, grass camping site. BBQ area, laundry facilities, linen hire, disabled facilities, babies bathroom and sewage dump point.

ACCOMMODATION

KEITH



KEITH HOTEL/MOTEL

2 Makin Street, Keith

08 8755 1122

keithhotel.com.au

admin@keithhotel.com.au

Friendly country pub with 10 Hotel units and 18 Motel units, just off the highway!

ACCOMMODATION

MUNDULLA



MARYFIELD RETREAT

Cnr Rowney & Pigeon Flat Roads, Mundulla

0439 471 106

facebook.com/Maryfield-Retreat-B-B

maryfield@internode.on.net

Maryfield was built in 1927 amongst magnificent gums on the edge of the Moot Yang Gunya Swamp. Maryfield Retreat features a private self contained unit with ensuite, queen size bed and a sofa bed. Set in a relaxed garden & walking distance to Mundulla township. Breakfast provisions provided. Reflexology sessions available on request.

OLD MUNDULLA HOTEL CABINS AND DAISY COTTAGE

Nalang Road, Mundulla

08 87534 044

mundullahotel.com.au

oldmundullahotel@bigpond.com

Daisy Cottage is a quaint 3 bedroom self contained cottage nestled among the trees. It's the perfect accommodation for a relaxed country getaway. To compliment the cottage there are also 3 cabins that each have a queen bed, reverse cycle split system, flat screen TV and bathroom. For anyone looking for quiet spot straight across the road from the pub, then these are for you.



THE COMMON COTTAGE

Jewel Street, Mundulla

0437 356 357

thecommoncottage@outlook.com

The Common Cottage is a 3 bedroom cottage (one of which is an outside bungalow) located in the small town of Mundulla, only 8km from Bordertown and overlooking the bushland that surrounds the town 'The Common'. It is just a short walk to the Old Mundulla Hotel and The Mundulla General Store. Accommodates up to 6 guests. Wi-Fi available.

ACCOMMODATION

MUNDULLA



MUNDULLA SHOWGROUNDS CARAVAN & CAMPING

Crn Mile Lane & North Terrace, Mundulla

A quiet and peaceful place to stay. Enter from Mile Lane between the adventure playground and the tennis courts.

Look for the "IRON RANGER" (he's made from scrap metal) near the public toilet/shower block to insert your self-registration fee for powered and non-powered sites.

ACCOMMODATION

PADTHAWAY



PADTHAWAY CARAVAN PARK

75 Beeamma Parsons Road, Padthaway

08 8765 5212 or 0412 546 792

padthawaycaravanpark.com.au

relax@padthawaycaravanpark.com.au

A peaceful and quiet park located near Riddoch Highway offers cabins, on-site vans, camping, and powered sites surrounded by well-maintained gardens, gum, and native trees. The park provides various facilities such as BBQ, disabled facilities, amenities block, laundry, animal enclosure, mini-golf, swings, and free Wifi. Pets allowed with conditions. Management is available on-site 24/7.

ACCOMMODATION

WILLALOOKA



WILLALOOKA TAVERN & STORE

Riddoch Highway, Willalooka

08 8757 8242

[facebook.com/Willalooka-Tavern](https://www.facebook.com/Willalooka-Tavern)

willalookatavern@gmail.com

The Tavern can sleep guests in modern up-to-date accommodation which includes double bed en-suites, single rooms and family rooms. All rooms have access to a kitchenette with a microwave, sink, toaster, kettle, free coffee and tea, washing machine and fridge. Our accommodation is popular with travellers, shearers and contractors alike.

ACCOMMODATION

WOLSELEY



DUNALAN COTTAGE BED AND BREAKFAST

18960 Dukes Highway, Wolseley

08 8753 2323 or 0417 827 122

dunalan.com

dunalan@bigpond.com

Located on a 2000ha working farm on the SA/Vic border, is a self-contained cottage that can accommodate 2-12 people. It has a fully equipped redgum kitchen, and is child and pet-friendly. Guests can enjoy an astro turf tennis court and a golf course within walking distance. The property provides home-cooked afternoon tea on arrival, bed linen, and fresh continental breakfast supplies. Wi-Fi available.

WOLSELEY HOTEL

Railway Terrace, Wolseley

08 8753 2239

facebook/wolseley-hotel

Budget accommodation. - 9 rooms, shared bathroom, 2 double rooms, 1 family room 6 single rooms with 2 single beds in each. Heaters and fans are available. Shared kitchen with guest dining/communal area. ATM and meals/takeaway available 7 days.



DINING

BORDERTOWN

Bakeries

Bordertown Bakery

99 Farquhar Street, Bordertown

08 8752 2966

Morning Loaf Bakery

81 North Terrace, Bordertown

8752 1037

Cafes

Cafe La Vie

2/119 Scott Street, Bordertown

08 8752 0885

Soul Cafe

81 Woolshed Street, Bordertown

08 8752 1985

Fast Food

Bordertown Mobil

41 North Terrace, Bordertown

08 8752 1365

Bordertown Cafe & Restaurant

60 North Terrace, Bordertown

0456 906 612

Bordertown Shell Roadhouse

60 North Terrace, Bordertown

08 8752 1035

OTR Bordertown

1 Dukes Highway, Bordertown

08 8752 1997

Tolmer Restaurant

83 Binnie Street, Bordertown

08 8752 1354

continue over page

DINING

BORDERTOWN

Fast Food

Liberty Bordertown

41 North Terrace, Bordertown
100 Dukes Highway, Crn Creecoona Terrace,
Bordertown
08 8752 1464

Restaurants & Hotels

Bordertown Hotel

79 East Terrace, Bordertown
08 8752 1016

Woolshed Inn Hotel Motel

101 Woolshed Street, Bordertown
08 8752 0347

Bordertown Chinese Restaurant

66 Woolshed Street, Bordertown
08 8752 0347

Bordertown Motel

25 Dukes Highway, Bordertown
08 8752 1444

Belacan Malaysian Restaurant

54 Woolshed Street, Bordertown
0467 815 501

DINING

KEITH

Bakeries

Keith Bakery & Coffee Shop

Makin Street, Keith
08 8755 1405

Morning Loaf Bakery

Cnr Makin & Heritage Streets, Keith
0475 032 565

Fast Food

24 Seven Roadhouse

14 Dukes Highway, Keith
08 8755 3181

Keith Gateway Cafe

2 Dukes Highway, Keith
08 8755 1700

Cafes

Henry & Rose

15 Heritage Street, Keith
08 8755 1061

Restaurants & Hotels

Keith Hotel/Motel

2 Makin Street, Keith
08 8755 1122

DINING

PADTHAWAY

Fast Food

Padthaway General Store
15 Memorial Drive, Padthaway
08 8765 5020

Restaurants & Hotels

Farmer's Leap Cellar Door
41 Hodgson Road, Padthaway
08 8765 5251

DINING

WILLALOOKA

Restaurants & Hotels

Willalooka Tavern & Store
Riddoch Highway, Willalooka
08 8757 8242

WOLSELEY

Restaurants & Hotels

Wolseley Hotel
Railway Terrace, Wolseley
08 8753 2239

THANK YOU FOR VISITING THE TATIARA

